





*Discover Greece..
discover the magic...
discover....onboard S/Y TROIA...
let us show you the magic.....*



TROIA is a unique 112-foot sailing yacht that has the highest degree of luxury without sacrificing any of its sailing performance. The self-furling sail system allows for effortless operation, by just the push of a button. She has two 400 MTU engines that develop a cruising speed of 12 knots. This most impressive sailing ship turns heads whenever she sails into port! She accommodates up to twelve passengers in six lovely and spacious cabins. The master suite is in the stern of the yacht and is the full width of the yacht. There is a VIP suite in bow cabin with large bathroom and walk around bed. In addition she has 4 double bed staterooms which have en suite bathrooms. All cabins have a mini-fridge, TV, DVD, CD player, and safe and are fully air-conditioned. Her aft deck has a fantastic outdoor U-shaped table, which is perfect for el fresco dining, or dining can take place in her salon/dining room with windows all around offering panoramic views. With the highest quality of its workmanship and wood, the salon offers guests the ability to relax or dine without loosing touch with the outside environment. Satellite TV, DVD and Internet are also onboard. She is staffed by a crew of five.

Master & VIP cabins



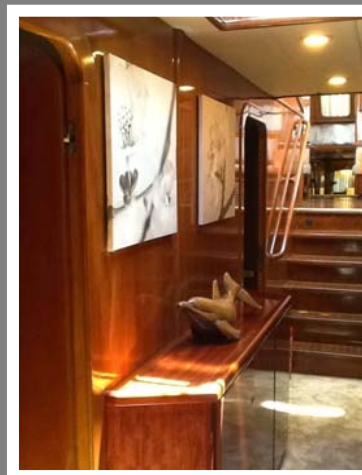
Master and VIP cabins have dressing tables, large closet space, TV,DVD, CD-player with i-pod connection, safe, mini bar, hairdryer, bathrobes and toiletries.

Staterooms

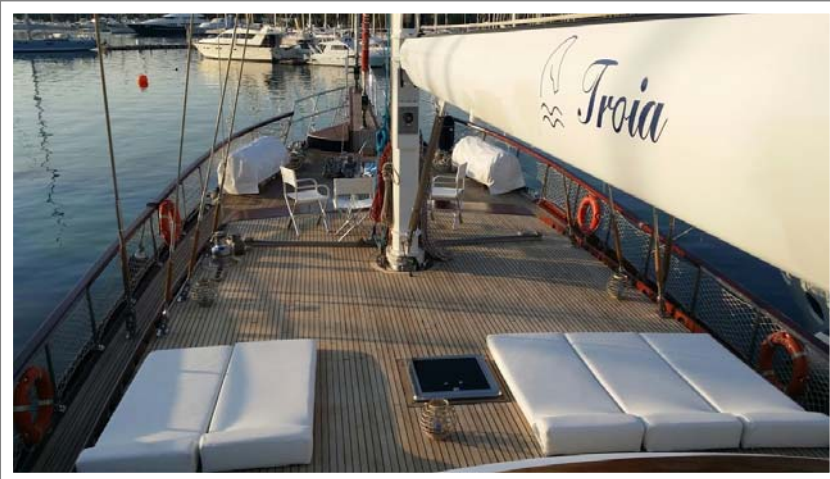
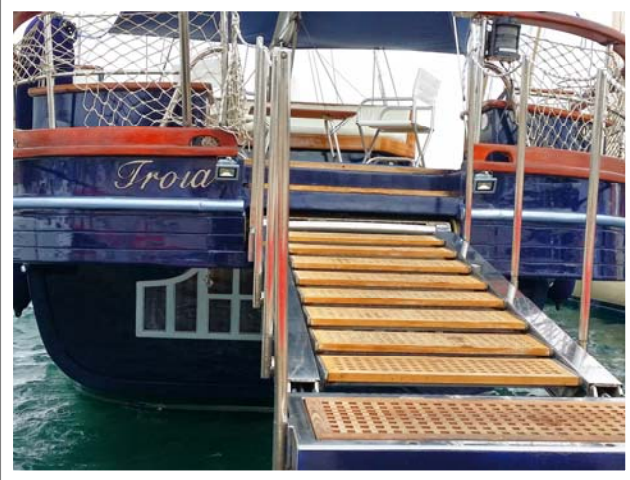


S/Y Troia has four double bed staterooms each cabin has ensuite bathroom. All staterooms have TV, DVD, CD-player, safe, mini-bar, hairdryer, bathrobes and toiletries

Interior saloon area



Outdoor areas



Water toys





Specifications

Charter Amenities and Extras

L.O.A.: 112ft', 6 cabins (1 master cabin, 1 VIP cabin, 4 double bed cabins all cabins with en-suite facilities.

Sails-Deck: Sail System - Mast Hydraulic Furling - Nirvana System, winch system - Hydraulic - Lewmar

Navigation: VHF/GMDSS, GPS plotter, Autopilot, Navtex, Radar, Depth sounder, Log, Wind instruments, Plug and play.

Kitchen equipment: Fridge, Deep freezer, Cockpit ice box, Microwave Oven, Gas Oven, Ice-maker, Espresso/filter maker.

Cabins: A/C, ensuite facilities, Electric toilets, hairdryer, TV, DVD, remote keyboard for internet connection with TV. Each cabin has TV, DVD, Safe, minibar, hairdryers Bed linen, Pillows, bath and beach towels, Blankets, Plugs 220V, Fans.

Water fun/ amenities: Adult Water Ski gear, childrens Water Ski Gear, .Water Tube Lightspeed, Double Hot Dog Sea Skateboard, 06. 4,7 M Tender with 70HP Outboard YAMAHA Engine, Jet Ski YAMAHA GP800R, snorkeling and fishing gear

Construction	Wood / 2001/ refit 2014
Length	34.00m / 112 ft
Maximum beam	6.90 m / 22.70 ft
Displacement	140 T
Draft	4.40 m /14.50 ft
Mast	Hydraulic furling
Main engines	2 x 400 hp / 1850 rpm - MTU 6R183TE62 (OM 447LA)
Fuel capacity	4000 lt
Fresh water tank	4000 lt



